

Port of Koper

SHORTER > SMARTER > PARTNER

The maritime port on Amber RFC

September 2019



About the Company

established in

1957

- public limited company listed on the Ljubljana stock exchange
- terminal operator of all 12 specialized terminals in the port

maritime
throughput in 2018

24

million tons

- container throughput in 2018: 988.499 TEU
- cars throughput: 754.409 units



1,600

employees in the Luka Koper Group

- concession granted for the management of the port area until 2043
- invests in infrastructure and suprastructure in the port area
- national spatial plan for the development of the port adopted in 2011

1st container terminal in the Adriatic

Among largest port for cars in the Mediterranean

- EU core port of the TEN-T network
- important gateway for supply of CEE markets

Evolution through decades



The port in numbers

12 specialized terminals



26 berths



3.4 km of operative quays



35 km of railway tracks

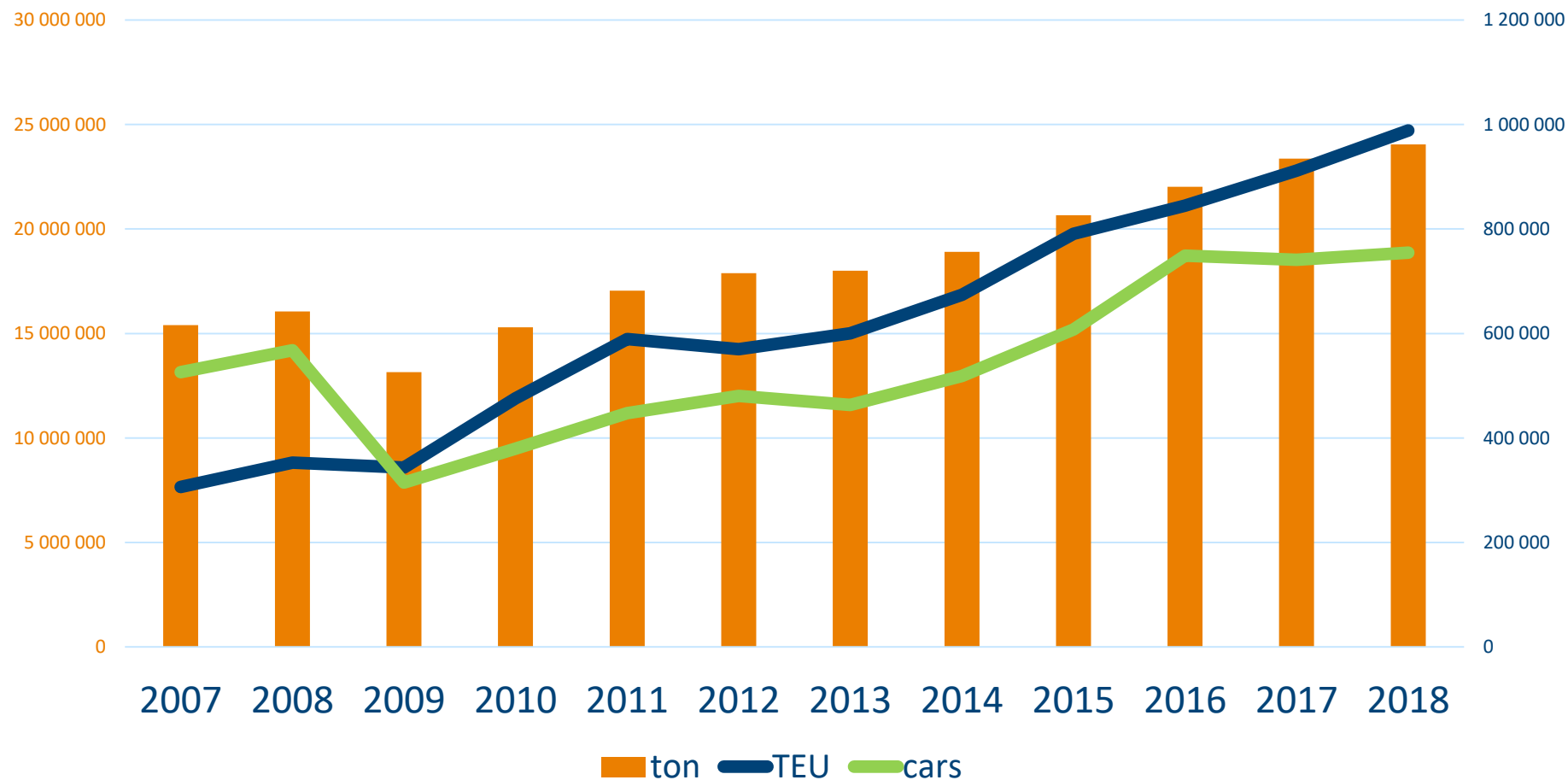
Maritime throughput history

ton

total maritime throughput

Containers (TEU)

Cars (units)



Hinterland markets



Poland
Containers, Cars,
General cargo



Czechia
Containers, Cars,
General cargo



Germany
Containers, Cars



Romania
Containers



**Croatia, Bosnia &
Herzegovina, Serbia**
Containers, cars, general
cargo



Bulgaria
Containers

LUKA KOPER
Port of Koper

Austria:
Absolute market leader - more than
7 M tonnes of various goods handled
every year

Slovakia:
Container market leader



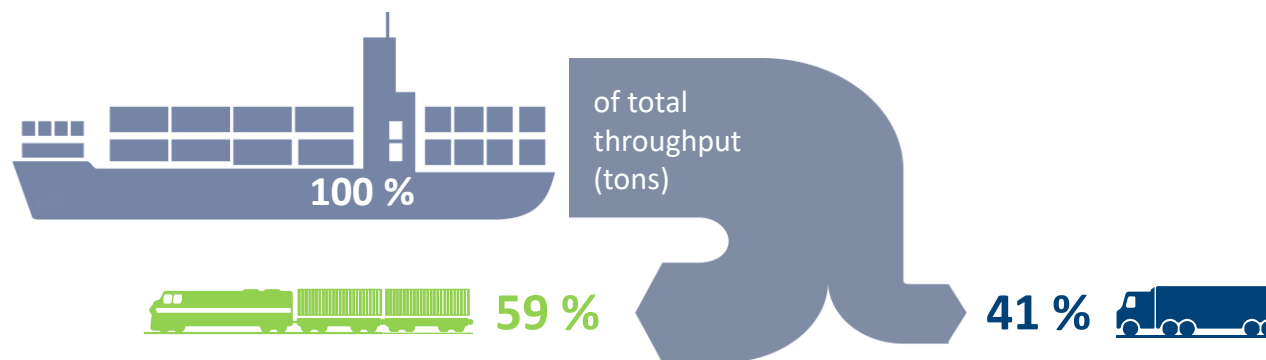
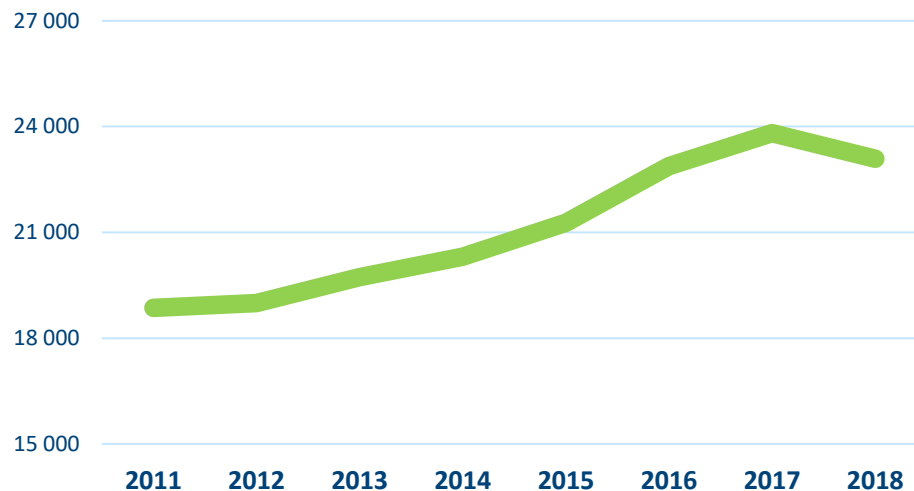
Hungary:
Container market leader
+ cars, electronics,
agro/food/fodder



Slovenia:
Domestic port

Port of Koper modal split

Trains arrivals/departures



Multi-purpose port

Containers



The largest terminal in the Adriatic

Cars and Ro-Ro



Among top terminals in Med

Break bulk



Diversity of products is the motto

Perishables



Over 50 years of experience

Coal and iron ore



Gateway for power and steel industry supply

Project cargoes



Big cranes and experienced staff

Alumina and other minerals



Specific facilities for raw materials

Timber



Top timber terminal in the region

Livestock



Export and staging point for cattle and sheep

Liquid bulk



Handling fuels, chemicals and vegetable oils

Cereals and fodder



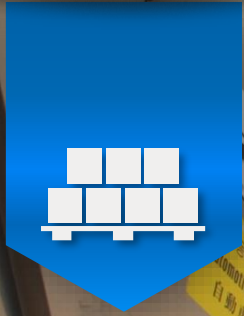
Grains, seeds, soya and other agro-food products

Passengers



Terminal located just 200 m from old city center

General cargo terminal



- metal and non metal products
- foodstuff: coffee, sugar, rice,...
- paper cellulose
- project cargo
- reefer cargo
- timber
- livestock

The Dry Bulk Terminal



Iron ore and coal terminal



- 18 meters of quayside depth
- Cellulose anty-dust system
- Automated transshipment

Liquid bulk terminal



- Fuels and chemicals
- 45 shore tanks with 200.000 m3 of total capacity



Car and RO-RO terminal



- among largest port for cars in the Mediterranean
- gateway for more than 20 global car producers
- import and export flows

Container terminal in numbers



432 reefer points



4 berth



14,5 m max allowed draft

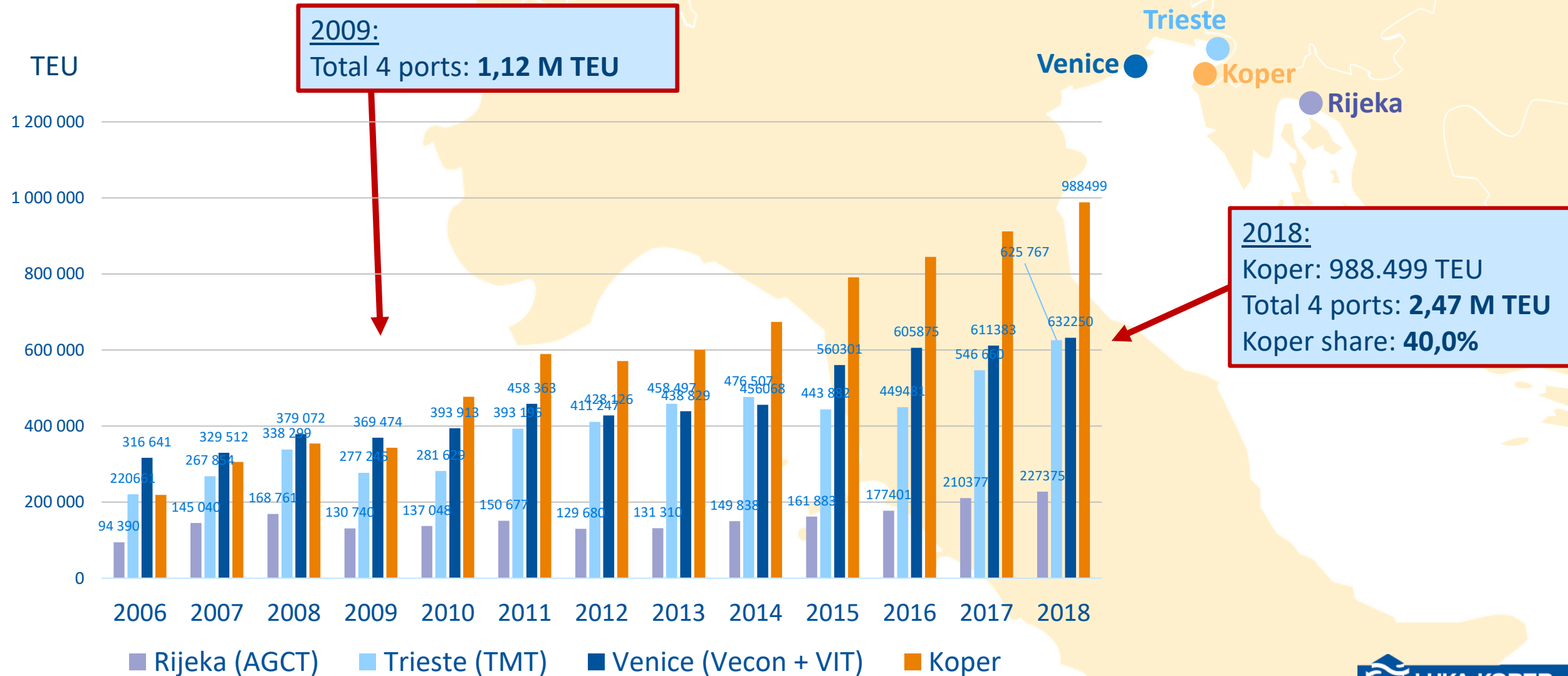


600 m operational quaysides



5 x 700m
2 x 270 m of railway tracks
2 x 300 m

Leading container terminal in North Adriatic



Developing efficient and competitive container railway services

Block Container trains:

12-13 arrivals-departures /daily
80-90 trains/week



New capacity on the terminal: **125 trains/week**

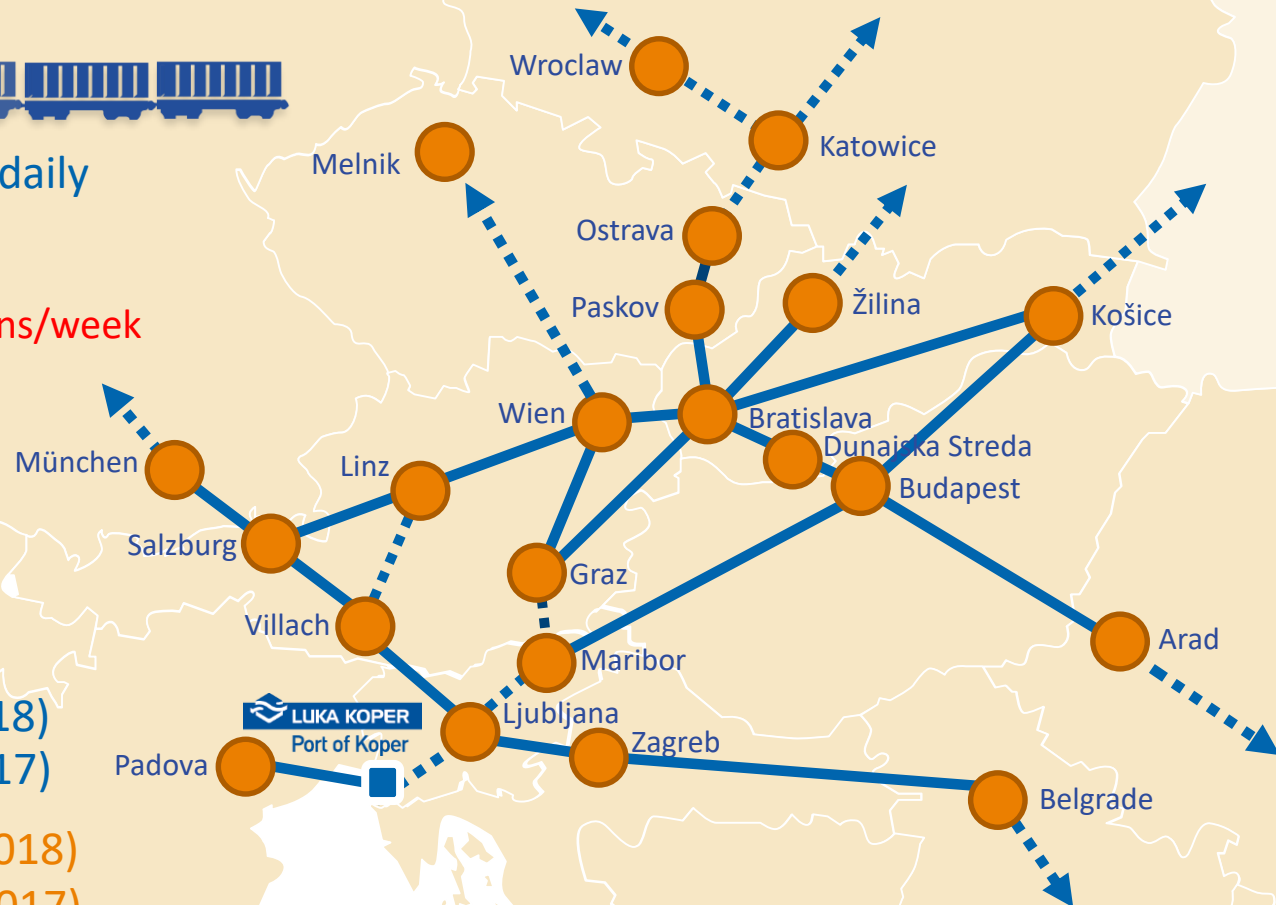
**Container terminal
modal split**

Transshipment 1%

99 %

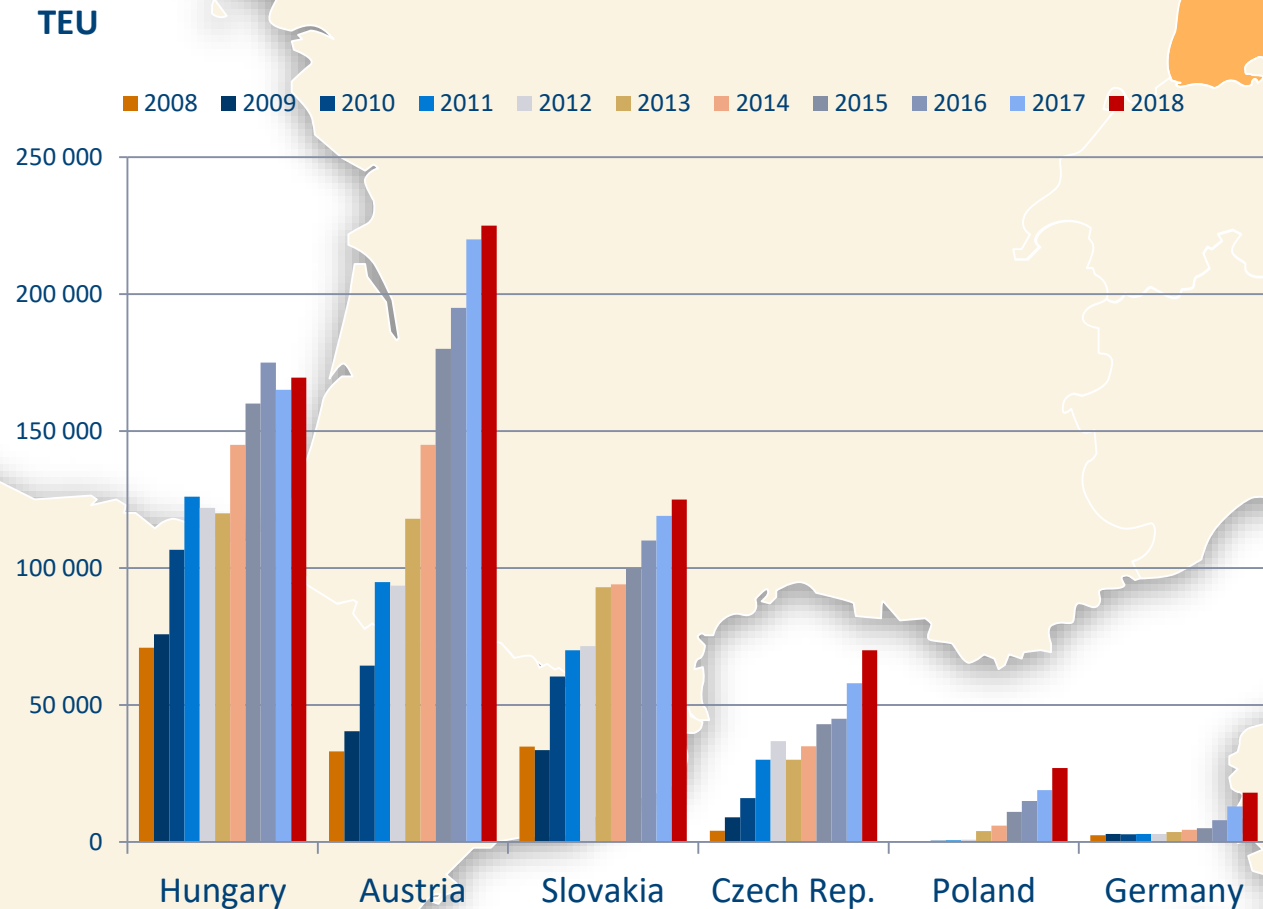
50 % Rail (2018)
53 % Rail (2017)

50 % Road (2018)
47 % Road (2017)



Top 6 foreign container markets

Full TEUs + stuffing + stripping in Koper, estimated volumes



LUKA KOPER
Port of Koper

Direct Services from Far East

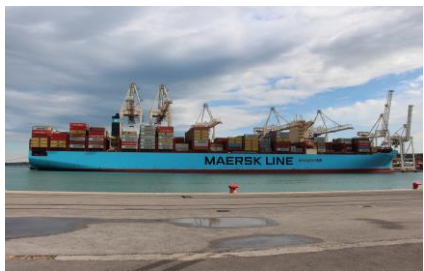
2M alliance

Maersk Line + MSC
> Koper as 1st port of call



Ocean alliance

CMA-CGM, COSCO, EVERGREEN, OOCL
> Koper as first and last port of call



Future challenges

Port of Koper today-up to 15.000 TEU's vessels

Tomorrow => cascading effect + alliances => over 20.000 TEU's vessels

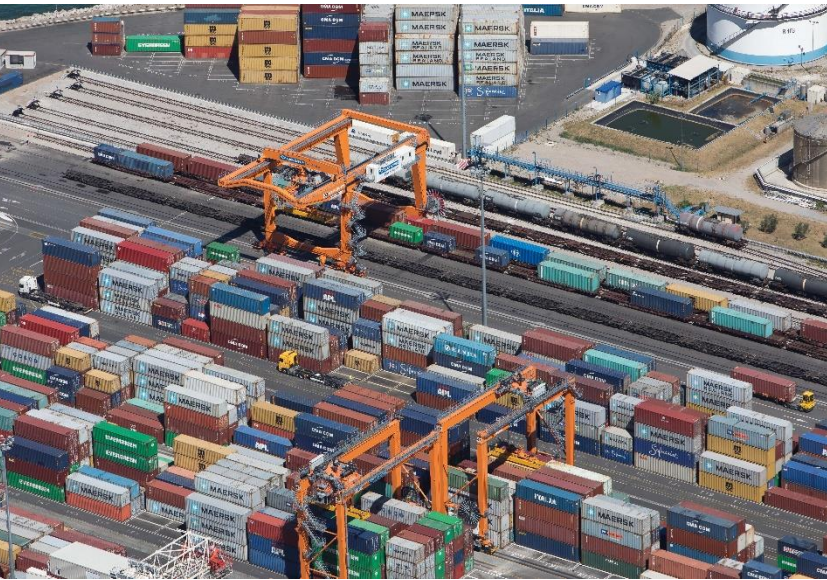


What will port infrastructure need to change to accomodate such ships?

- Nautical access & manoevrability in port
- Pilotage
- Tug boats
- Water depth
- Quay front reinforcement
- STS Gantry cranes
- Yard capacity
- **Hinterland logistics capacity**



Activities for improving performance of the railway



Infrastructural measures:

- new railway capacity on the container terminal with new 3 RMG cranes (in operations)-4th RMG to be delivered
- substantial investments on the whole SLO railway network (in progress)
- adjustments of internal railway network

Operational measures:

- improved coordination and cooperation between the Port and shunting area located out of the port (under SŽ management)
- simplified and improved technical procedures

IT measures:

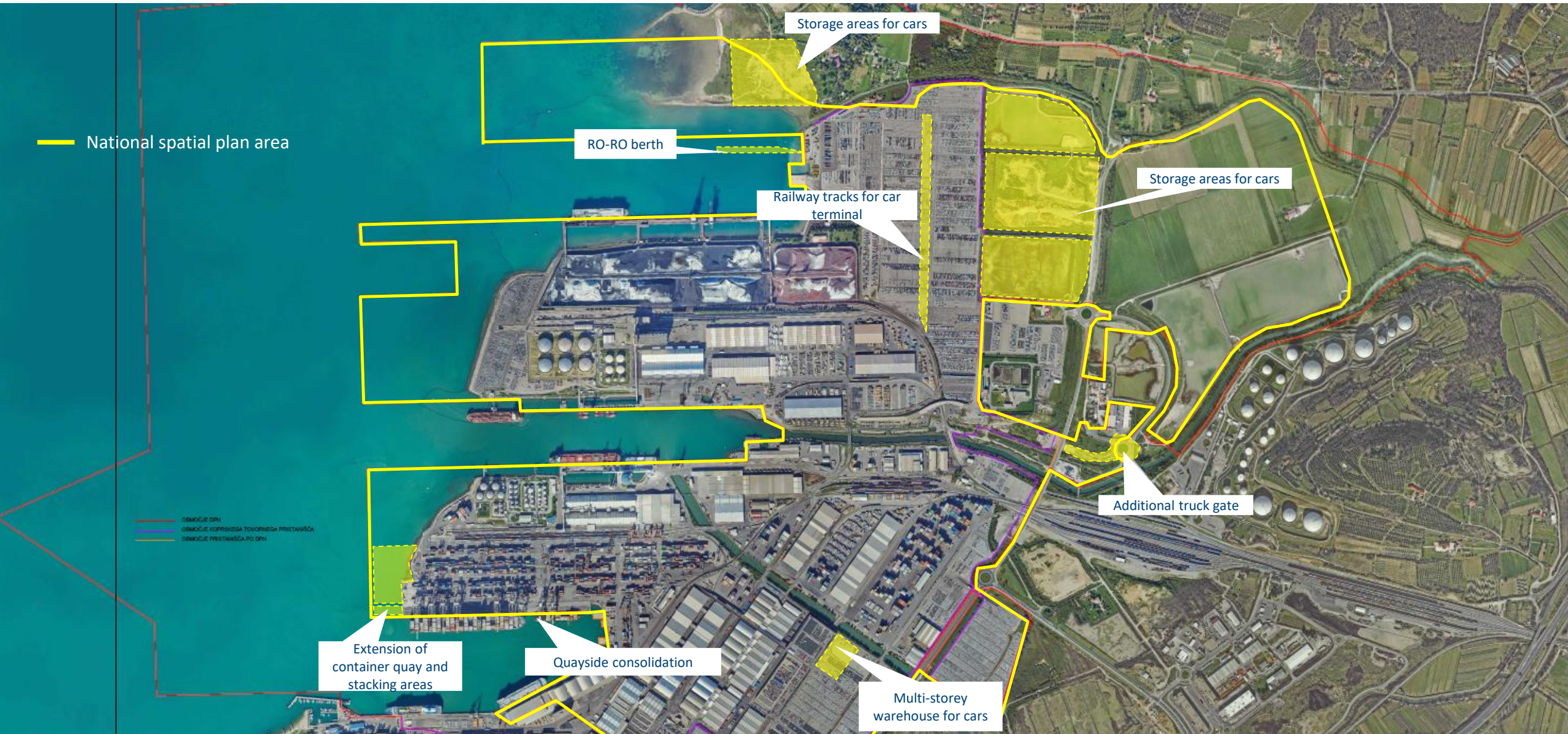
- ongoing analysis of current solutions and identification of common future IT data Exchange for carriers/forwarders/other

Ongoing investments on Car terminal



**New railway access 4x 700 m track + loading ramps.
To be operational in 1Q 2020**

Planned/ongoing investments



Thank you for your attention

