

Amber
Rail Freight Corridor



Principal / Diversionary line



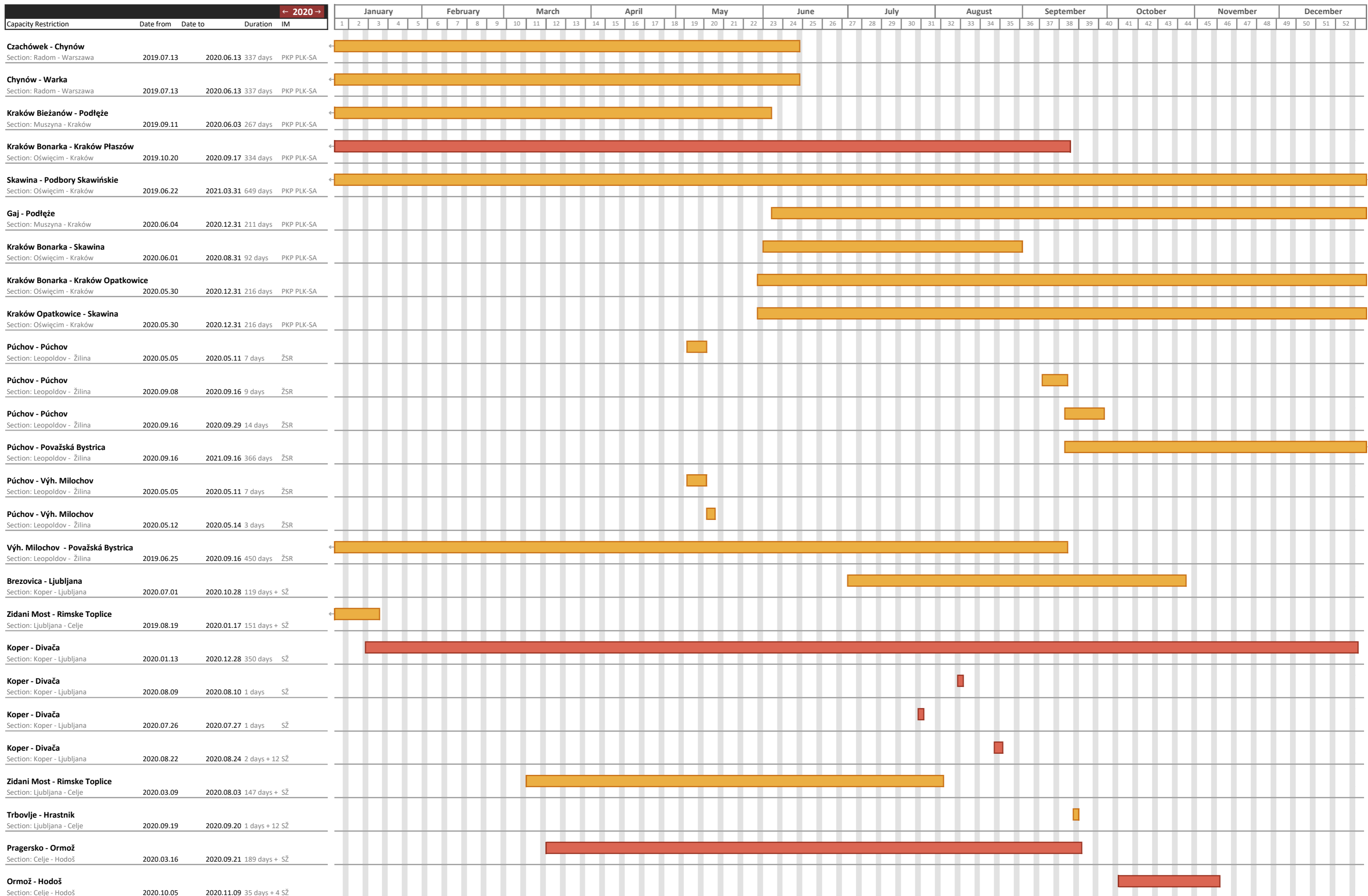
IM	ID	Section	Direction	Line		Year		Week		Period from		Period to		Duration	Time of day	Reason for restriction	Traffic impact				Traffic measures				Description	International coordination	In yearly timetable	IM Project ID (Optional)	Last update	cancelled
				From	To	From	To	From	To	Date from	Time from	Date to	Time to				Total Closure	Reduced Track Availability	Speed Restrictions	Weight, Length, Profile	Diesel only	Cancellation	Rerouting	Train replacement						
PKP PLK-SA	51_11_33	Radom - Warszawa	>	Czachówek	Chynów	2019	2020	42	35	2019.10.20	0:00	2020.08.29	24:00:00	315 days	continuous	Others	LT	S						modernization		Y		2019.11.27	N	
PKP PLK-SA	51_11_34	Radom - Warszawa	<	Czachówek	Chynów	2018	2019	37	28	2018.09.10	0:00	2019.07.12	24:00:00	306 days	continuous	Others	LT	S						modernization		Y		2018.11.29	N	
PKP PLK-SA	51_11_41	Radom - Warszawa	>	Chynów	Warka	2019	2020	42	35	2019.10.20	0:00	2020.08.29	24:00:00	315 days	continuous	Others	LT	S						modernization		Y		2019.11.27	N	
PKP PLK-SA	51_11_42	Radom - Warszawa	<	Chynów	Warka	2018	2019	37	28	2018.09.10	0:00	2019.07.12	24:00:00	306 days	continuous	Others	LT	S						modernization		Y		2018.11.29	N	
PKP PLK-SA	51_11_51	Radom - Warszawa	>	Warszawa Gł. Towarowa	Warszawa Praga	2019	2019	15	30	2019.04.12	0:00	2019.07.25	24:00:00	105 days	continuous	Signal	LT	S						signal and catenary renewal		Y		2018.11.29	N	
PKP PLK-SA	51_11_54	Radom - Warszawa	>	Warszawa Gdańska	Warszawa Praga	2018	2019	45	30	2018.11.08	0:00	2019.07.26	24:00:00	261 days	continuous	Bridge	LT	S					O	bridge renewal		Y		2018.11.29	N	
PKP PLK-SA	51_11_60	Katowice - Tunel	<	Tunel	Charsznica	2019	2019	23	31	2019.06.03	0:00	2019.07.31	24:00:00	59 days	continuous	Track & Rail	LT							renewal		Y		2018.11.29	N	
PKP PLK-SA	51_11_66	Katowice - Tunel	<	Wolbrom	Jaroszowiec Olkuski	2019	2019	22	44	2019.06.01	0:00	2019.10.30	24:00:00	152 days	continuous	Track & Rail	LT	S						renewal		Y		2018.11.29	N	
PKP PLK-SA	51_11_71	Katowice - Tunel	>	Wolbrom	Jaroszowiec Olkuski	2018	2019	36	22	2018.09.03	0:00	2019.05.31	24:00:00	271 days	continuous	Track & Rail	LT	S						renewal		Y		2018.11.29	N	
PKP PLK-SA	51_11_73	Katowice - Tunel	>	Charsznica	Wolbrom	2018	2019	36	22	2018.09.03	0:00	2019.05.31	24:00:00	271 days	continuous	Track & Rail	LT	S						renewal		Y		2018.11.29	N	
PKP PLK-SA	51_11_76	Katowice - Tunel	<	Charsznica	Wolbrom	2019	2019	22	44	2019.06.01	0:00	2019.10.30	24:00:00	152 days	continuous	Track & Rail	LT	S						renewal		Y		2018.11.29	N	
PKP PLK-SA	51_11_79	Muszyna - Kraków	>	Kraków Bieżanów	Podłęże	2019	2020	27	35	2019.07.01	0:00	2020.08.29	24:00:00	426 days	continuous	Others	LT	S						modernization		Y		2019.11.27	N	
PKP PLK-SA	51_11_85	Oświęcim - Kraków	>	Kraków Bonarka	Kraków Płaszów	2020	2021	11	17	2020.03.15	0:00	2021.04.20	24:00:00	402 days	continuous	Others	T							modernization		Y		2019.11.27	N	
PKP PLK-SA	51_11_91	Oświęcim - Kraków	>	Skawina	Podbory Skawińskie	2018	2019	13	8	2018.04.01	0:00	2019.02.24	24:00:00	330 days	continuous	Others	LT	S						modernization		Y		2018.11.29	N	
PKP PLK-SA	51_11_92	Oświęcim - Kraków	>	Skawina	Podbory Skawińskie	2019	2021	25	14	2019.06.22	0:00	2021.03.31	24:00:00	649 days	continuous	Catenary	LT	S						catenary modernization		Y		2018.11.29	N	
PKP PLK-SA	51_11_93	Oświęcim - Kraków	>	Skawina	Podbory Skawińskie	2019	2019	5	48	2019.02.01	0:00	2019.11.30	24:00:00	303 days	continuous	Others	LT	S						modernization		Y		2018.11.29	N	
PKP PLK-SA	51_11_94	Oświęcim - Kraków	<	Skawina	Podbory Skawińskie	2019	2019	11	25	2019.03.11	0:00	2019.06.21	24:00:00	103 days	continuous	Others	LT	S						modernization		Y		2018.11.29	N	
PKP PLK-SA	51_11_105	Oświęcim - Kraków	<	Kraków Bonarka	Skawina	2019	2019	5	48	2019.02.01	0:00	2019.11.30	24:00:00	303 days	continuous	Others	LT	S						modernization		Y		2018.11.29	N	
PKP PLK-SA	51_11_106	Oświęcim - Kraków	<	Kraków Bonarka	Skawina	2019	2019	5	48	2019.02.01	0:00	2019.11.30	24:00:00	303 days	continuous	Others	LT	S						modernization		Y		2018.11.29	N	
PKP PLK-SA	51_11_107	Oświęcim - Kraków	>	Kraków Bonarka	Skawina	2019	2020	48	22	2019.12.01	0:00	2020.05.31	24:00:00	183 days	continuous	Others	LT	S						modernization		Y		2019.11.27	N	
PKP PLK-SA	51_11_110	Katowice - Tunel	>	Długoszyn	Jaworzno Szczakowa	2019	2019	26	30	2019.06.28	0:00	2019.07.28	24:00:00	31 days	continuous	Others	LT	S						modernization		Y		2018.11.29	N	
PKP PLK-SA	51_11_111	Katowice - Tunel	<	Długoszyn	Jaworzno Szczakowa	2018	2019	28	15	2018.07.11	0:00	2019.04.10	24:00:00	274 days	continuous	Others	LT	S						modernization		Y		2018.11.29	N	
PKP PLK-SA	51_11_112	Katowice - Tunel	<	Długoszyn	Jaworzno Szczakowa	2019	2019	31	35	2019.07.29	0:00	2019.08.28	24:00:00	31 days	continuous	Others	LT	S						modernization		Y		2018.11.29	N	
PKP PLK-SA	51_11_136	Muszyna - Kraków	<	Gaj	Podłęże	2020	2021	36	10	2020.09.01	0:00	2021.03.02	24:00:00	183 days	continuous	Others	LT							modernization		N		2019.11.27	N	
PKP PLK-SA	51_11_151	Oświęcim - Kraków	<	Kraków Bonarka	Skawina	2020	2020	23	36	2020.06.01	0:00	2020.08.31	24:00:00	92 days	continuous	Others	LT	S						modernization		Y		2018.11.29	N	
PKP PLK-SA	51_11_152	Oświęcim - Kraków	>	Kraków Bonarka	Kraków Opatkowice	2020	2020	22	53	2020.05.30	0:00	2020.12.31	24:00:00	216 days	continuous	Others	LT	S						modernization		Y		2018.11.29	N	
PKP PLK-SA	51_11_155	Oświęcim - Kraków	<	Kraków Opatkowice	Skawina	2020	2020	22	53	2020.05.30	0:00	2020.12.31	24:00:00	216 days	continuous	Others	LT	S						modernization		Y		2018.11.29	N	
PKP PLK-SA	51_11_156	Skalité - Oświęcim	<>	Most Wista	Czechowice Dziedzice	2021	2022	42	25	2021.10.15	0:00	2022.06.16	24:00:00	245 days	continuous	Track & Rail	T	LT				R		modernization		N		2019.11.27	N	
PKP PLK-SA	51_11_157	Oświęcim - Katowice	<>	Sosnowiec Jęzor	Mysłowice Brzezinka	2021	2022	45	9	2021.11.02	0:00	2022.02.22	24:00:00	113 days	continuous	Track & Rail	T	LT				R		modernization		N		2019.11.27	N	
ŽSR	561812002	Leopoldov - Žilina	<>	Púchov	Púchov	2020	2020	21	21	2020.05.18	0:00	2020.05.24	24:00:00	7 days	continuous	Track & Rail	ST	S						modernization, track 1		Y		2018.12.07	N	
ŽSR	561812003	Leopoldov - Žilina	<>	Púchov	Púchov	2020	2020	37	38	2020.09.08	0:00	2020.09.16	24:00:00	9 days	continuous	Track & Rail	ST	S						modernization, track 2		Y		2018.12.07	N	
ŽSR	561812004	Leopoldov - Žilina	<>	Púchov	Púchov	2020	2020	38	40	2020.09.16	0:00	2020.09.29	24:00:00	14 days	continuous	Track & Rail	ST	S						modernization, track 1		Y		2018.12.07	N	
ŽSR	561812005	Leopoldov - Žilina	>	Púchov	Považská Bystrica	2020	2021	38	38	2020.09.16	0:00	2021.09.16	24:00:00	366 days	continuous	Track & Rail	LT	S						modernization, track 1		Y		2018.12.07	N	
ŽSR	561812006	Leopoldov - Žilina	<	Púchov	Považská Bystrica	2021	2021	38	51	2021.09.16	0:00	2021.12.15	24:00:00	91 days	continuous	Track & Rail	LT	S						modernization, track 2		Y		2018.12.07	N	
ŽSR	561812007	Leopoldov - Žilina	>	Púchov	Vých. Milocho	2020	2020	21	21	2020.05.18	0:00	2020.05.24	24:00:00	7 days	continuous	Track & Rail	LT	S						modernization, track 1		Y		2018.12.07	N	
ŽSR	561812008	Leopoldov - Žilina	<	Púchov	Vých. Milocho	2020	2020	20	20	2020.05.16	0:00	2020.05.17	24:00:00	2 days	continuous	Track & Rail	LT	S						modernization, track 2		Y		2019.07.12	N	
ŽSR	561812009	Leopoldov - Žilina	<	Vých. Milocho	Považská Bystrica	2019	2020	26	38	2019.06.25	0:00	2020.09.16	24:00:00	450 days	continuous	Track & Rail	LT	S						modernization, track 2		Y		2019.11.21	N	
ŽSR	561812010	Leopoldov - Žilina	<	Púchov	Vých. Milocho	2020	2020	19	19	2020.05.25	0:00	2020.05.27	24:00:00	3 days	continuous	Track & Rail	LT	S						modernization, track 2		Y		2019.07.12	N	
ŽSR	561812011 Deleted	Leopoldov - Žilina	<	Púchov	Vých. Milocho	2020	2020	20	20	2020.05.13	0:00	2020.05.15	24:00:00	3 days	continuous	Track & Rail	LT	S						modernization		Y		2019.07.12	N	
MAV	5511079	Hatvan - Miskolc	<>	Mezőkeresztes-Mezőnyárád	Emőd	2020	2020	31	35	2020.07.27	23:40	2020.08.24	3:40:00	28 days + -20 h 0 min	modal contin	Others	T	LT	S					D	modernization			2019.01.24	N	
MAV	5511090	Hatvan - Miskolc	>	Mezőkeresztes-Mezőnyárád	Emőd	2020	2020	35	40	2020.08.25	0:00	2020.09.30	23:59:00	36 days + 23 h 59 min	continuous	Others	LT	S						D	modernization			2019.01.24	N	
MAV	5511091	Hatvan - Miskolc	<>	Mezőkeresztes-Mezőnyárád	Emőd	2020	2020	35	40	2020.08.25	23:40	2020.09.30	3:40:00	36 days + -20 h 0 min	modal contin	Others	T	LT	S					D	modernization			2019.01.24	N	
MAV	5511096	Hatvan - Miskolc	<	Nyékkládháza	Miskolc-Rendező	2020	2020	40	42	2020.10.01	0:00	2020.10.14	6:00:00	13 days + 6 h 0 min	continuous	Others	LT	S						D	modernization			2019.01.24	N	
MAV	5511097	Hatvan - Miskolc	<>	Nyékkládháza	Miskolc-Rendező																									

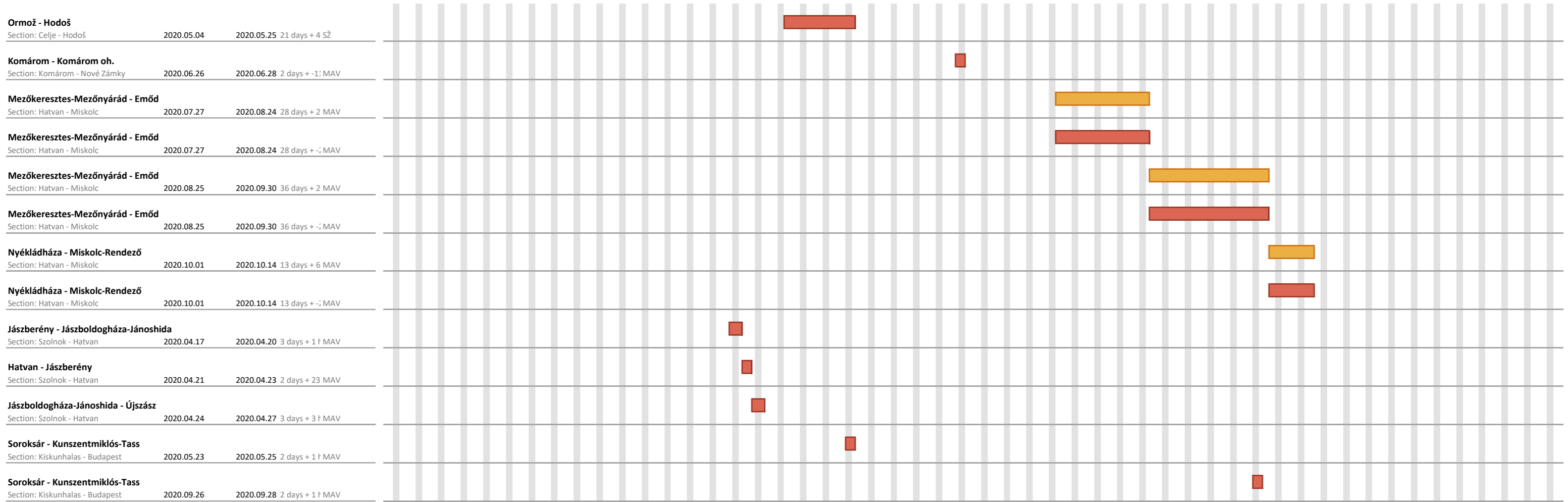
Amber, Overview

Show sections

Update

Total Capacity Restriction ■ All day ▨ Day/Night Partial Capacity Restriction ■ All day ▨ Day/Night



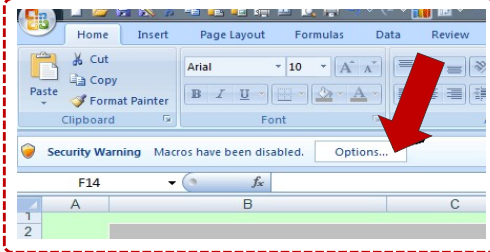


i HELP


I can't click on the map!

This interactive map works only when macros are enabled.

If you don't have macros enabled you will see the security warning (as shown below) when opening the document for the first time. Click options and enable macros:



To avoid this security warning everytime you open the document, you can enable macros permanently. Follow these steps:

1. Click on Office button 
2. Click on Excel options
3. Select Trust Center
4. Click on Trust Center Settings...
5. Select Macro Settings
6. Enable all macros

Legal Notice

In the present overview, the infrastructure managers concerned have published the planning status for infrastructure availability restrictions along the related Rail Freight Corridor. The published measures constitute a snapshot of the situation at the date of publication and are subject to constant changes. Please note that the information provided should be used for rough orientation purposes only and may not constitute the basis for any legal claim.

Publication of possessions does not substitute any national law or legislation and RUs/applicants must refer to national network Statements.

